

Gree Wifi Smart Module Software Setup

Note: Before setting up, please make sure that the wifi signal in the location of the installed indoor unit of the air-condition is of a good / fair and stable signal.

1. Download App from the following links.

- Google Play Store or App Store

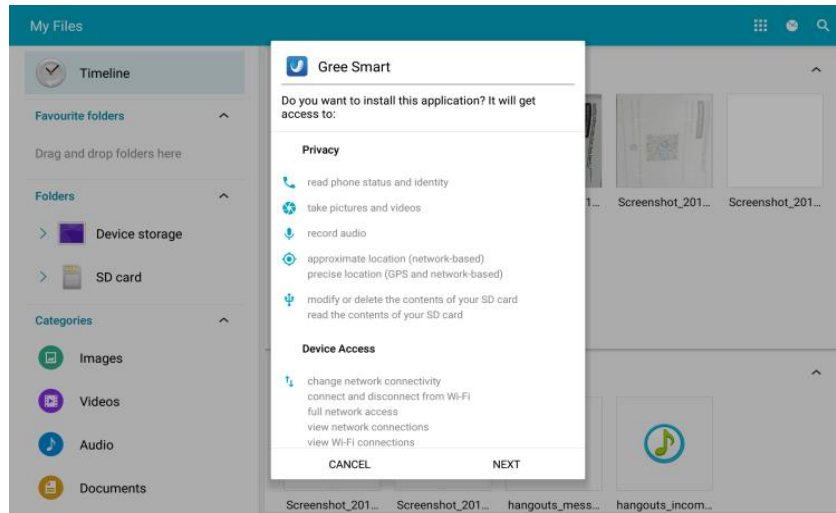


- BT Commercial Website - <http://www.btmalta.com/2/29/download-area>
- QR Code for Android

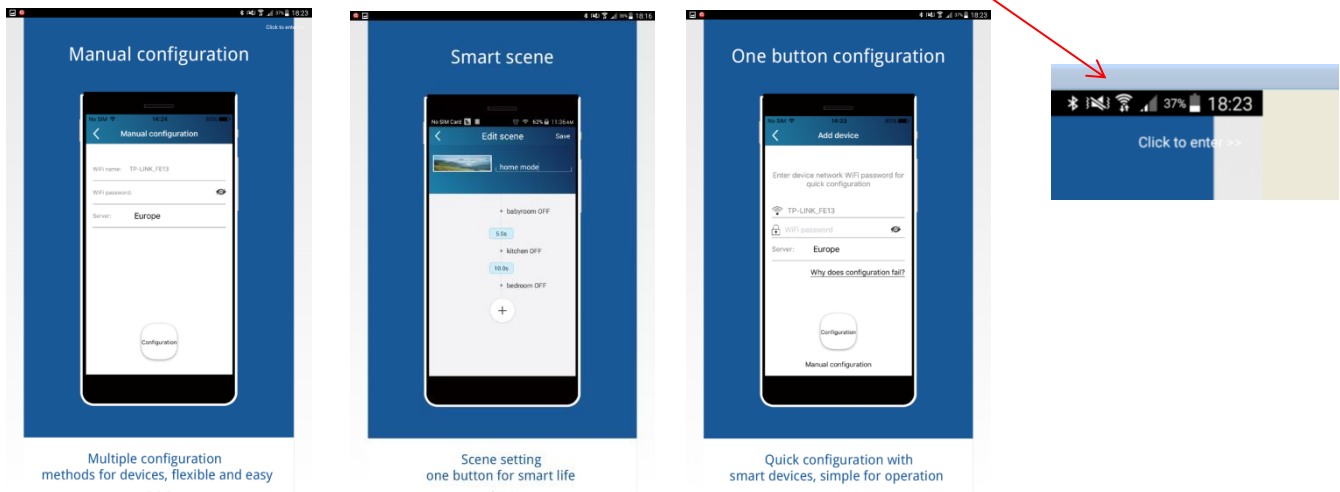


2. Launch Application

- If message is received 'Install Blocked' proceed to settings and switch on 'Unknown sources'
- Click 'Next / Install'




3. Swipe through the last splash screen and select 'Click to Enter' Top right of screen

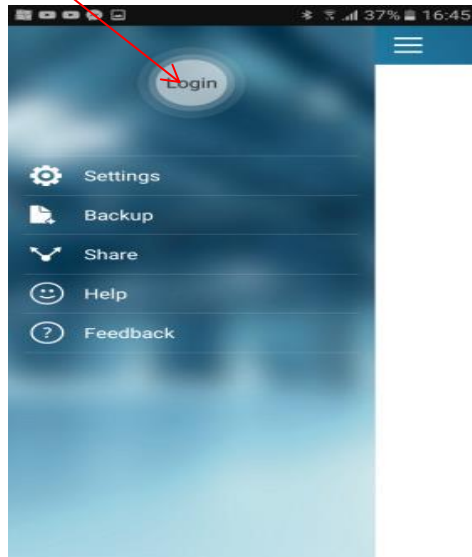


4. When prompted select Server 'Europe' and press OK

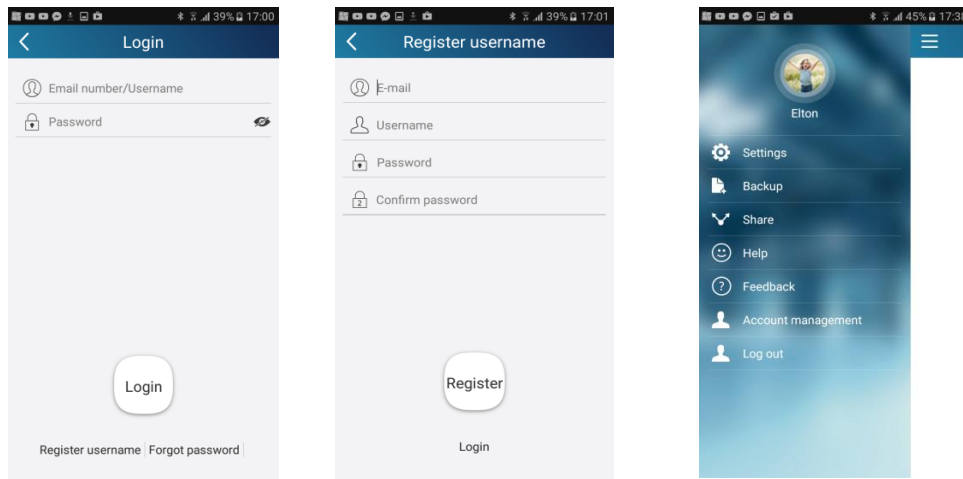


5. Click on 

6. Select Login from settings in Home Screen



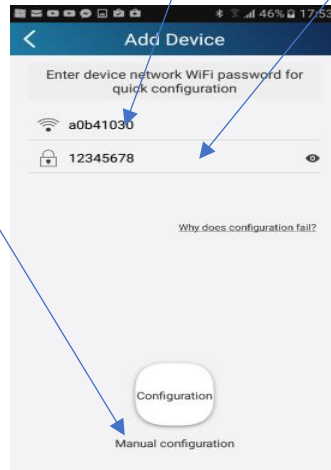
7. Select 'Register Username' and Register User Name and Password



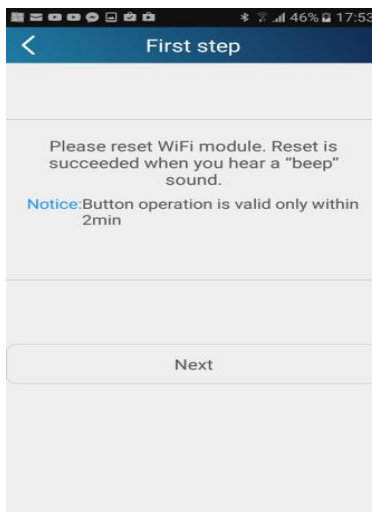
8. Add Device



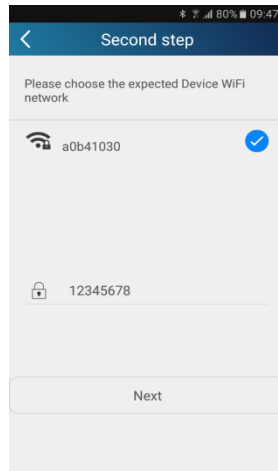
9. Enter Wifi Name of A/C for example a0b41030 , this is the mac code located on the wifi module. One can search this from Settings / Wifi / view the list of Wifi names.
- Input Wifi Password - Normally the default password is 12345678
 - Select Manual Configuration



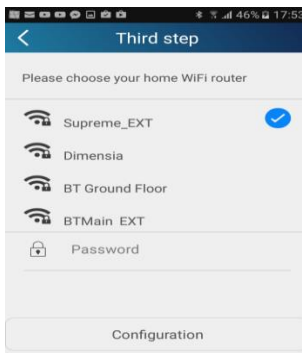
10. Reset Wifi Module by pressing 'Mode' + 'Wifi' buttons on Remote simultaneously
- The Buzzer in the Indoor unit will give out a sound when collocation is succeeded
 - Click Next



- Second Step is to confirm that the Device Wifi Network is correct and Click Next

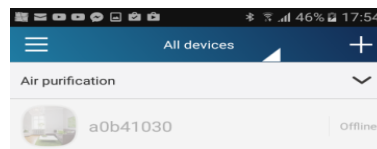


- Third Step is to choose your Home Wifi Router to which the A/C will be connected to



- Enter Password
- Click on configuration

11. The Selected A/C unit will be shown as Offline



12. Test by switching off Wifi and switch on 3G/4G Data Network (on mobile device). By this method the A/C can be also operated from Outside the Home

